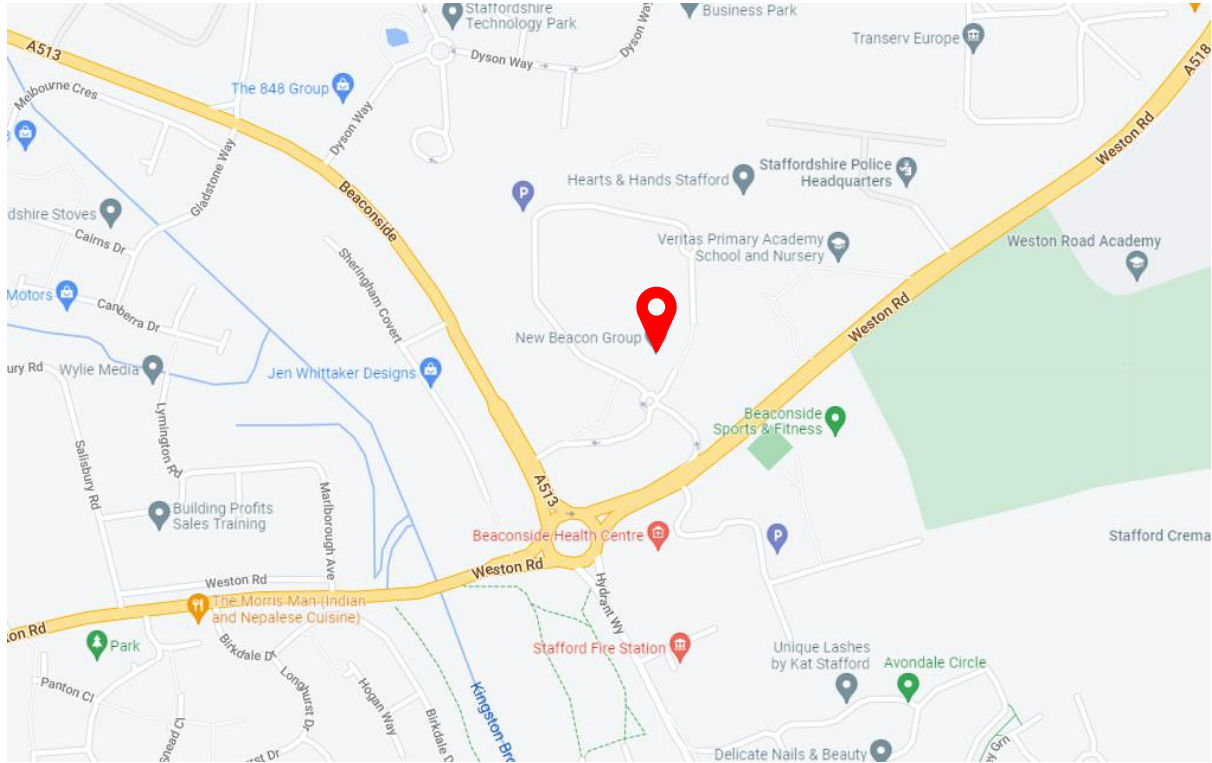




# EPX Technical Services

IT Support | Cybersecurity | Cloud Solutions

How to find EPX Technical Services:



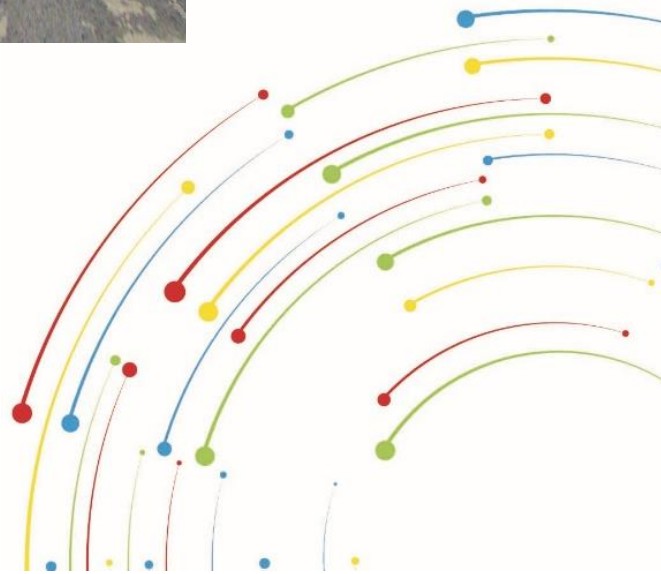
Once you are on Weston Road, with New Beacon Group on your left, turn left onto the slip road:



EPX Limited  
Stafford Enterprise Park  
Weston Road  
Staffordshire  
ST18 0BF

**T:** 03333 44 00 98  
**E:** [info@epx.co.uk](mailto:info@epx.co.uk)  
**W:** [www.epx.co.uk](http://www.epx.co.uk)

EPX Limited. Registered in England and Wales – Company No. 05400600 – VAT No. 876 3459 78  
Registered Office address – 28 Forest Road, Meols, Wirral, Merseyside, CH47 6AX





# EPX Technical Services

IT Support | Cybersecurity | Cloud Solutions

You are now at New Beacon Group, if you turn right before the security hut (see below) there is a short stay carpark. If you are staying for more than 20 minutes, you need to let us know your registration so we can register you for free parking.

**If the emergency barrier is down, key in code 329916**



## To find the EPX office:

Once parked, head towards the main building and go through the main entrance (under the white canopies). Turn right and we are the first office on your right hand side opposite the café.



EPX Limited  
Stafford Enterprise Park  
Weston Road  
Staffordshire  
ST18 0BF

**T:** 03333 44 00 98  
**E:** [info@epx.co.uk](mailto:info@epx.co.uk)  
**W:** [www.epx.co.uk](http://www.epx.co.uk)

EPX Limited. Registered in England and Wales – Company No. 05400600 – VAT No. 876 3459 78  
Registered Office address – 28 Forest Road, Meols, Wirral, Merseyside, CH47 6AX

